



📍 4 Webbs Close, Melksham, SN12 7PA

📄 Auction Guide £235,000

- For Sale by Online Auction
- Thursday 12th February 2026
- Lot 45
- Guide Price £235,000+

🏠 Freehold

🏠 EPC Rating



LOT 45
FOR SALE BY ONLINE AUCTION
THURSDAY 12th FEBRUARY 2026
GUIDE PRICE £235,000+

4 Bedroom detached house situated in a small development in the centre of Melksham backing onto King George park. The property is in need of minor updating. Ideal investment or family home.

The accommodation comprises on the ground floor; entrance hall, dual aspect living room, dining room, kitchen, WC and utility room with door to the garden. On the first floor; landing, principle bedroom with ensuite, 3 further bedrooms and a bathroom. The property has double glazing and gas central heating.

To the front is a garden mainly laid to lawn with path to front door, garage and driveway. To the rear is a large raised deck (which requires attention) and large enclosed lawn.

what3words///consented.helps.diamonds

Situation & Description

4 Bedroom detached house situated in a small development in the centre of Melksham backing onto King George park. The property is in need of minor updating. Ideal investment or family home.

A bustling market town, Melksham has a number of supermarkets including Waitrose, Sainsbury's and Asda as well as a variety of shopping, leisure facilities and schools. Situated only 12 miles south of the M4 motorway, Melksham has good bus, road and rail links. The Georgian city of Bath (c.14 miles) and the ever-expanding town of Chippenham (c. 6 miles) offer a comprehensive range of facilities and access to the M4 Motorway via junctions 17 and 18 respectively and mainline rail links to Bristol, Swindon and London Paddington.

The accommodation comprises on the ground floor; entrance hall, dual aspect living room, dining room, kitchen, WC and utility room with door to the garden. On the first floor; landing, principle bedroom with ensuite, 3 further bedrooms and a bathroom. The property has double glazing and gas central heating.

To the front is a garden mainly laid to lawn with path to front door, garage and driveway. To the rear is a large raised deck (which requires attention) and large enclosed lawn.

Viewings

To arrange a viewing, contact: Corsham Office on 01249 712039

There will be numerous pre-arranged open house viewing slots lasting for 30 minutes and you can book in by contacting the Auctioneers.

If you have any concerns with viewings, please contact the relevant Strakers office and we would be happy to discuss them with you and hopefully put you at ease.

Online Auction

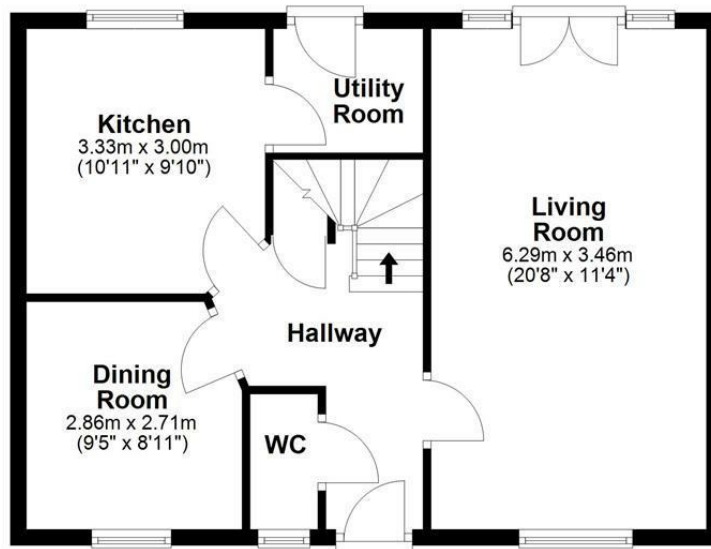
In order to bid at Strakers Online Auctions, you will first need to create an account by providing your contact details. You will be asked to read and accept our Online Auction Terms and Conditions. In order to bid online, you will be required to register a credit or debit card for the bidder security deposit. Strakers are required by law to carry out an online anti-money laundering check on all persons wishing to bid. In general terms, you are strongly advised to view the property and take professional advice as to its condition and suitability.

When the auction opens at 8am the day of the auction, you will be able to place bids in line with the pre-determined bid increment levels, using the bid increase (+) and decrease (-) buttons provided. It is recommended you check your web browser will allow you to bid in good time as some browsers' security can block the ability to bid. We recommend using Google Chrome when possible.



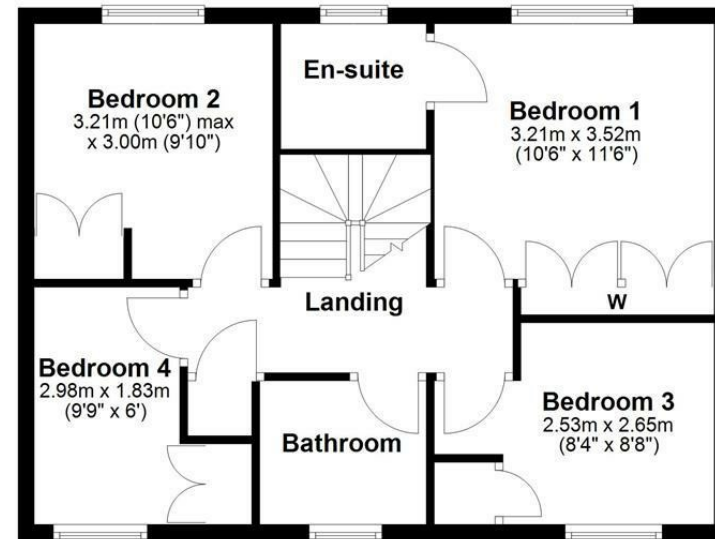
Ground Floor

Approx. 53.7 sq. metres (578.4 sq. feet)



First Floor

Approx. 53.7 sq. metres (578.4 sq. feet)



Total area: approx. 107.5 sq. metres (1156.8 sq. feet)

Disclaimer: These particulars, whilst believed to be accurate are set out as a general outline only for guidance and do not constitute any part of an offer or contract. Intending purchasers should not rely on them as statements of representation of fact, but must satisfy themselves by inspection or otherwise as to their accuracy. No person in this firm's employment has the authority to make or give any representation or warranty in respect of the property. All measurements and distances are approximate only. Your home is at risk if you do not keep up repayments on a mortgage or other loan secured on it.